



## ATTRACTIONS

- A** Typhoon Lagoon Surf Pool Float atop perfect 6-ft waves.
- B** Castaway Creek Lie back and relax for a 20-minute, toe-soaking ride.
- C** Ketchakiddee Creek Children's area complete with slides, raft rides and bubbling jets for little ones. (Must be 48" or under.)
- D** Keelhaul Falls Grab your inner tube and set off on a roaring rapid ride.
- E** Mayday Falls Whoosh through caves and waterfalls on the longest waterslide in the park.
- F** Gangplank Falls Family white-water rafting adventure.
- G** Humunga Kowabunga Shoot down triple speed slides. (48" height requirement)
- H** Storm Slides Three curving, 300-ft-long body slides.
- I** Shark Reef A saltwater adventure around a sunken tanker, with real sharks and schools of colorful tropical fish. Presented by NAUI
- J** Bay Slides Body slides for children. (must be 60" or under)
- K** Mountain Trail Lush trails with photo opportunities.
- L** Crush 'n' Gusher Prepare for uphill climbs and drops on this intense water coaster. (48" height requirement)

## FOOD & BEVERAGE

No food or drinks on the attractions or in the pools, please.

- 1** Leaning Palms: (DRINK REFILL STATION) Burgers, brew, sandwiches, pizza and salads (SEATING AVAILABLE)
- 2** Happy Landings Ice Cream
- 3** Typhoon Tilly's (seasonal) (DRINK REFILL STATION) Sandwiches, salads, snacks and spirits (SEATING AVAILABLE)
- 4** Lowtide Lou's (seasonal) (DRINK REFILL STATION) Snacks, ice cream and sodas. Sundries and towels
- 5** Let's Go Slurpin' (DRINK REFILL STATION) Frozen drink specialties and spirits
- 6** Getaway Glen Picnic area
- 7** Crush Hot Dog Cart Hot dogs, chips, sodas and drink refill station
- 8** Hideaway Bay Picnic area

## MERCHANDISE

- 9** Singapore Sal's Beachwear, gifts and sundries. Lockers, towels and life jackets
- 10** High 'N' Dry Photo pickup location, gifts and sundries. Lockers, towels and life jackets

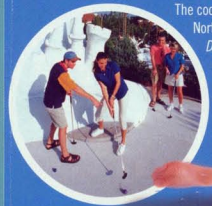


## THE STORY

Boats were tossed and palms were bent. And when the storm of storms finally blew out to sea, it left behind this topsy-turvy tropical paradise. A sun-drenched oasis for swimming, soaking and sliding.

LEGEND	
	Restrooms
	Automated External Defibrillators
	First Aid
	Information
	ATM
	Height Requirement
	Smoking Area
	Locker Rentals
	Physical Considerations (see reverse side)
	May Remain in Wheelchair/ECV

## SWIM. THEN SINK.



The coolest miniature golf this side of the North Pole is just a snowball's throw from Disney's Blizzard Beach. Built by Santa's elves, the Snow course and the Sand course are teeming with pint-size fun for everyone.

Disney's Winter Summerland Miniature Golf Course

## KEEP THE FUN FLOWING

Start with the *Magic Your Way* Base Ticket\* that gives you admission to one *Walt Disney World*® Theme Park per day, for 1-10 days. Hint: The more you play, the less you pay per day. Then add the *Water Park Fun & More* Option\*\* and enjoy a certain number of visits (based on the length of your ticket) to Disney's *Blizzard Beach* Water Park, *Disney's Typhoon Lagoon* Water Park, *DisneyQuest*® Indoor Interactive Theme Park and more!

\*Tickets and options are nontransferable and expire 14 days after first use, unless the *No Expiration Option* is purchased. Does not include activities/events separately priced. Visiting more than one Theme Park on the same day requires the *Park Hopper* Option.

\*\*Water Parks subject to seasonal and weather closures. Age restrictions may apply for access to certain facilities.

GET YOUR TICKETS WHEREVER DISNEY TICKETS ARE SOLD!



**1** Get a *Disney's PhotoPass* card from any Disney photographer.

Capturing the magic is as easy as 1-2-3!



**2** Give your card to photographers all over the Park and load it up with pics!



Visit [DisneyPhotoPass.com](http://DisneyPhotoPass.com)\* to view, share and order your *Disney's PhotoPass* photos AND upload your own as well. You can even create fun keepsakes! \*Photos available online for 30 days.



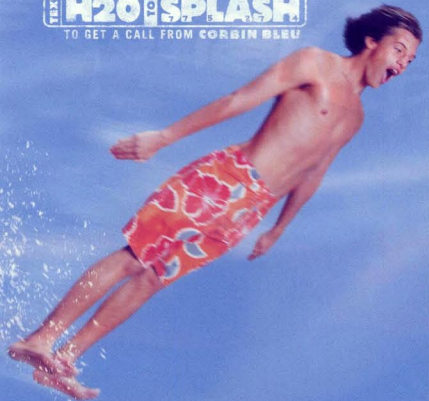
# Disney's water parks

BLOWS OTHER WATER PARKS AWAY

## GUIDEMAP



**TEST H2O SPLASH**  
TO GET A CALL FROM CORBIN BLEU



# SKI DISNEY

The Polar Opposite of Other Water Parks

This mobile site is data intensive. Standard airtime, data and messaging charges may apply. An unlimited text or data plan with your mobile service provider may help you avoid additional charges. You must be 18 or have your parent's permission before texting, streaming or downloading mobile content. Water Park subject to seasonal and weather closures.

## ATTRACTIONS

- GREEN SLOPES**
- ▲ **1 Summit Plummet** 120-foot vertical free-falling body slide. (48" height requirement)
  - ▲ **2 Slush Gusher** Snow-banked mountain gully-style speed slide. (48" height requirement)
  - ▲ **3 Teaboat Springs** World's longest family raft ride!
  - ▲ **4 Chairlift** One-way transportation to the top of Mt. Gushmore, with access to Summit Plummet, Slush Gusher and Teaboat Springs. *Please no food, drinks, loose articles, or bags.* ♿

- PURPLE SLOPES**
- ▲ **5 Toboggan Racers** Eight-lane toboggan slide. Mat pickup at top.
  - ▲ **6 Snow Stormers** Switchback slalom-style mat slides. Mat pickup at top.
  - ▲ **7 Downhill Double Dipper** Side-by-side racing slides. (48" height requirement)

- RED SLOPE**
- ▲ **8 Runoff Rapids** Open and enclosed inner tube runs. Tubes available at bottom of ride.
  - **9 Melt-Away Bay** A one-acre bobbing wave pool.
  - **10 Cross Country Creek** Continuous flowing creek, encircling the entire park.
  - **11 Ski Patrol Training Camp** Pre-teen area featuring slides, a T-bar drop and an iceberg walk.
  - ▲ **12 Tike's Peak** Children's area complete with slides, fountain play area and pop jets. (Must be 48" or under)

## FOOD & BEVERAGE

No food or drinks on the attractions or in the pools, please.

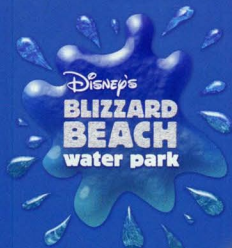
- **13 Avalunch** (seasonal) Light entrées, snacks, desserts and beverages, including refill station
- **14 Warming Hut** (seasonal) Light entrées, snacks, desserts and beverages, including refill stations (SEATING AVAILABLE)
- **15 Lottawatta Lodge** Entrées, snacks, desserts and beverages, including refill stations (SEATING AVAILABLE)
- **16 Cooling Hut** Snacks and beverages, including refill stations
- **17 Polar Pub** Adult beverages and spirits
- **18 Sled Dog Expeditions** Ice cream and soft drinks
- **19 Frostbite Freddy's** (seasonal) Adult beverages and spirits

## MERCHANDISE

- **20 Beach Haus** Blizzard Beach souvenirs, locker and towel rentals, beach apparel, beach towels, footwear, film and sundries.
- **21 Snowless Joe's** Locker, sundries, photo pickup, towel rentals and life jackets.
- **22 Sunglasses Hut** Sunglasses and accessories.

## ADDITIONAL ATTRACTION

- **23 Disney's Winter Summerland** Miniature golf on the Snow and Sand courses.



## THE STORY

What do you do when a freak snowstorm hits Florida? Build a ski resort, of course! But as our lift went up, so did the temperature, leaving some of the world's fastest, longest, slushing, gushing, downhill thrills and fun for the entire family.

## FOR YOUR ENJOYMENT & SAFETY

- A limited amount of complimentary tubes are available at all tube rides. Tubes provided at the attractions should remain in these locations. Recreational floatations are not permitted in the Typhoon Lagoon Surf Pool.
- Locker keys and towel rentals are available at both Water Parks.
- Life jackets are provided free of charge.
- Swim attire with rivets, buckles or exposed metal is not permitted on the attractions.
- Coolers are allowed; however, no alcoholic beverages or glass containers are permitted.
- Lost children are reunited at **i** stations inside each Park.
- Lost articles can be picked up at Guest Services. Due to the nature of some attractions, lost articles may be irretrievable. Glasses and jewelry should be removed. Disney's Water Parks cannot be responsible for lost articles.
- Information for Guests with disabilities and wheelchairs are available at Guest Services.
- No running or diving, please!
- Children under the age of 10 must be accompanied by an adult. Diaper-age children must wear plastic pants or swim diapers.
- Our lifeguards are highly trained and qualified. Please adhere to their instructions at all times.
- Please note that each attraction has its own guidelines. Most require that you be in good health and of certain age or height to participate.
- Certain attractions prohibit those with casts, braces, prosthetic limbs or any object that would pose a safety concern for the rider. Please stop by Guest Services for more details.
- Water Parks may close due to inclement weather or maximum Guest capacity. Admission media is nonrefundable. Operating hours are subject to change without notice.
- Smoking is permitted in designated areas only.
- ▲ For safety, you should be in good health and free from heart conditions, back or neck problems, or other conditions that could be aggravated by this adventure. Expectant mothers should not ride.

## LEGEND

- ♣ Restrooms
- ⚡ Automated External Defibrillators
- 🔑 Locker Rentals
- 🏥 First Aid
- ℹ Information
- 🏧 ATM
- ♣ Height Requirement
- 🚭 Smoking Area
- 🚻 Lockers
- 🔑 Locker Rentals
- ⚠ Physical Considerations
- ♿ May Remain in Wheelchair/ECV