

Themed Stairs

1	0	0	0	0	0	0	0	0	0
0	9	8	7	6	5	4	3	2	1
1	1	1	1	1	1	1	1	1	2
1	2	3	4	5	6	7	8	9	0

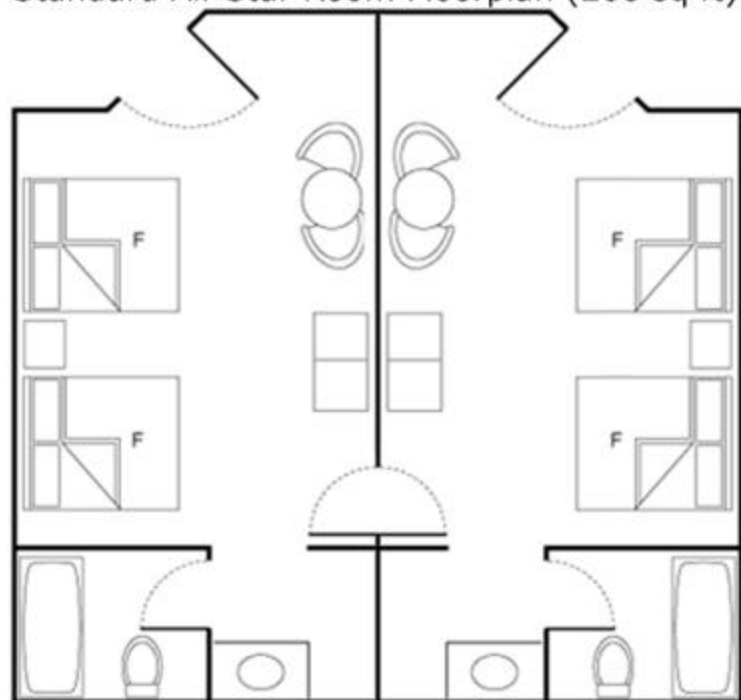
Building Icon

Stairs Elevator and Ice

6	6	6	6	6	5	5	5	5	5
4	3	2	1	0	9	8	7	6	5
4	4	4	4	4	5	5	5	5	5
5	6	7	8	9	0	1	2	3	4

Themed Stairs

Standard All-Star Room Floorplan (260 sq ft)



All Star Movies has 1,920 rooms featuring central a/c, décor in the building's movie theme, 2 double beds, nightstand, telephone, small table with 2 chairs, armoire, television, wall mirror, clock radio and an open closet area with shelves on top for extra storage. A vanity area with a single sink and mirror is separate from the tub and commode. A small key-operated wall safe to hold your valuables, is located in the closet area.

21	44
22	43
23	42
24	41
25	40
26	39
27	38
28	37
29	36
30	35
31	34
32	33

Themed Stairs

Building numbers marked with (D) have king rooms with disabled-access showers. (S) denotes buildings with king rooms with tubs.

All-Star Movies

Area	Bldg #	Icon
101 Dalmatians	1	Pongo
Mighty Ducks	2 (S)	Duck Hockey Mask
Mighty Ducks	3 (D)	Duck Hockey Mask
101 Dalmatians	4	Perdy
Fantasia	5 (S)	Hat
Love Bug	6	Herbie (Front)
Love Bug	7	Herbie (Back)
Fantasia	8 (D)	Jack-in-the-box
Toy Story	9	Woody
Toy Story	0	Buzz Lightyear

Room Numbers are [bldg][floor][1-64]  
Sports: flrs 1-3, Music: flrs 4-6, Movies: flrs 7-9

For example, the rooms on the top floor on either side of "Woody" facing Buzz are 9901 and 9964.

Connecting Rooms noted on drawing. Rooms noted in a different color are the king rooms for those buildings that have them.